

Stainless steel is a common chromium/nickel alloy steel used in thousands of products from ocean-going craft to tableware. A protective chromium oxide film forms on its surface which gives stainless its superior corrosion-resistant property. When properly maintained, stainless provides excellent luster, strength and durability. And, in most applications, stainless will not rust or stain even after many years of service.

However, stainless steel is NOT stain or rust proof. When used in contact with chloride salts, sulfides or other rusting metals, stainless will discolor, rust or even corrode.

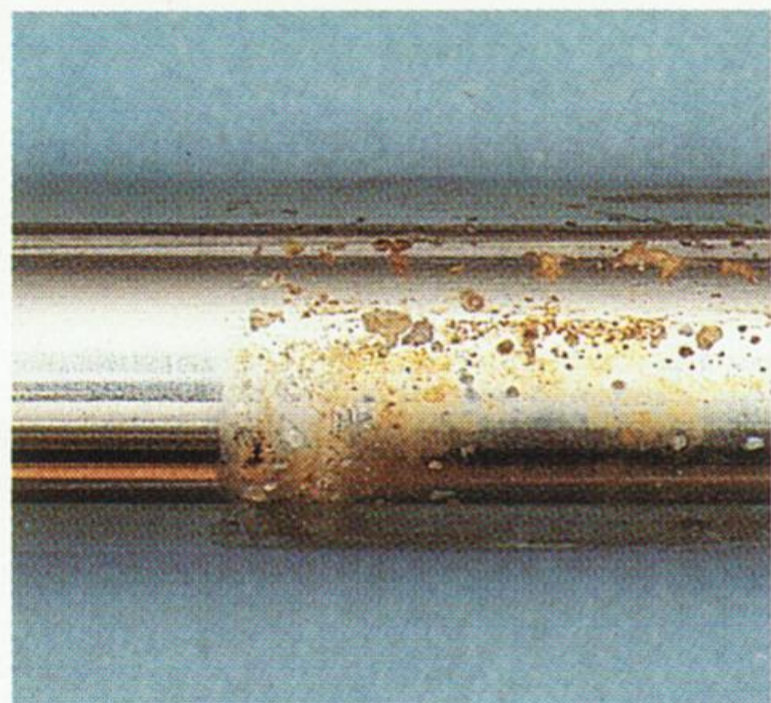
Proper care and maintenance of stainless in marine environments, polluted surroundings, salted highways, or other situations where stainless may be exposed to corrosive elements, will help keep your stainless products beautiful and functional for years to come.



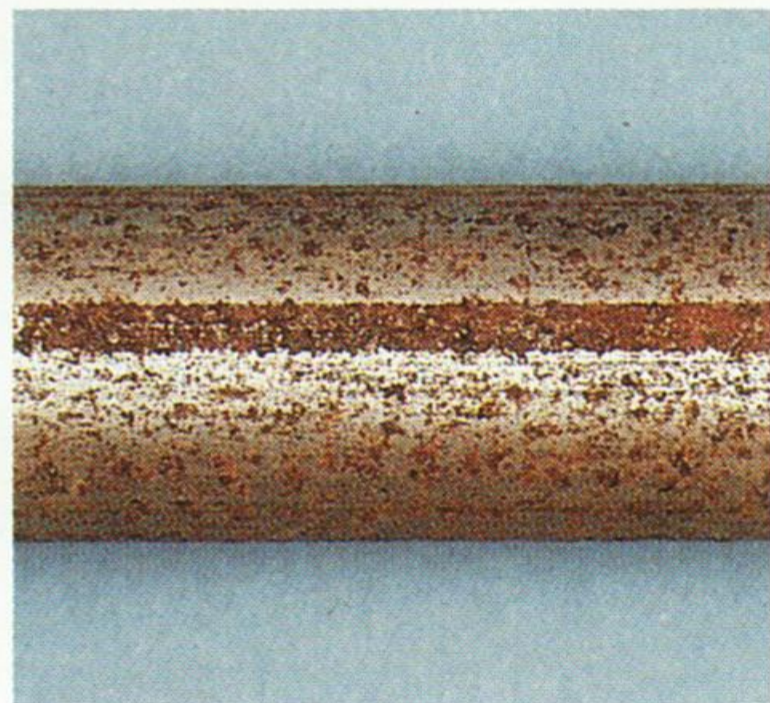
Stainless exposed for 3 weeks to sea spray and groundwater containing sulfides, corrosion so severe that handrails were removed after 3 months.



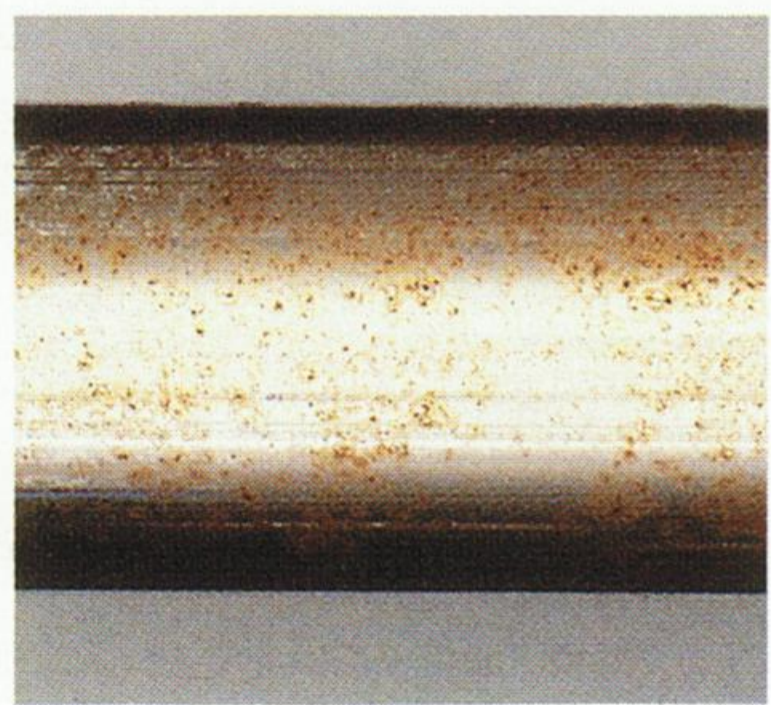
Barnacle build-up on this swim platform led to crevice corrosion.



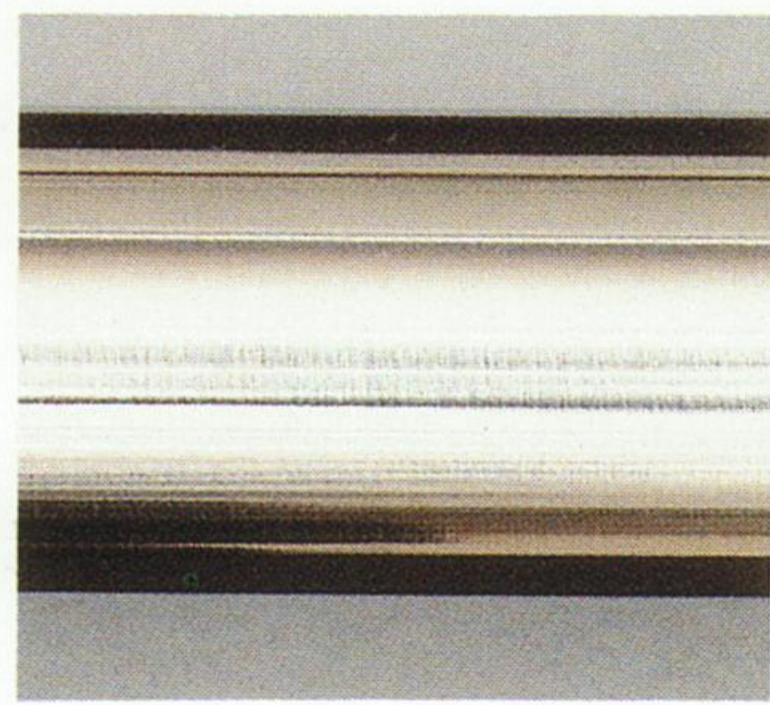
This lead-in stainless tube from a pool cleaning device stayed below the water's surface, while the area above the water rusted.



Never used, this pipe was stored with pool chemicals.



Iron condensation dripped on this boat rail from a steel brace supporting the roof over the boat.



The same boat rail after cleaning with a common car-wax cleaner.

1

ALWAYS
clean stainless frequently with soap and water. Any cleaner safe for glass is usually safe for stainless.

2

ALWAYS
remove rust spots as soon as possible with a brass, silver, or chrome cleaner. Irreversible pitting will develop under rust that remains on stainless for any period of time.

3

ALWAYS
use a cleaner, like a good car wax, for added beauty and protection.

4

NEVER
use coarse abrasives like **sandpaper** or **steel wool** on stainless. These may actually cause rusting.

5

NEVER
clean with mineral acids or bleaches.

6

NEVER
leave stainless in contact with iron, steel, or other metals which cause contamination leading to rust or corrosion.